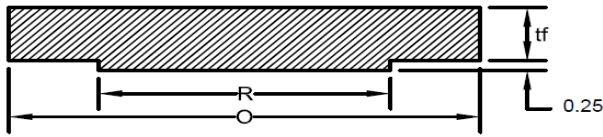
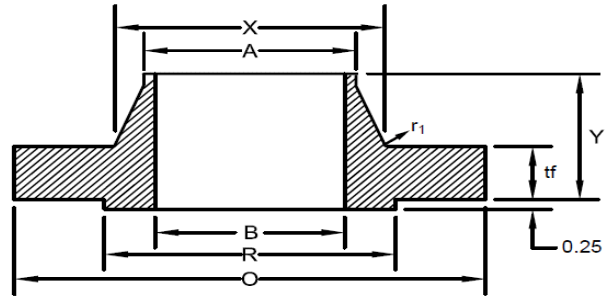




**SERIES A CLASS 400 FLANGE**  
ASME B16.47-2017



Blind



Welding Neck

1	2	3	4	5	6	7	8	9	10	11	12	13
Minimum Thickness										Bolt		
Nominal Pipe Size	Outside Diameter <i>O</i>	Welding Neck <i>t<sub>f</sub></i>	Blind <i>t<sub>f</sub></i>	Length Through Hub <i>Y</i>	Diameter of Hub <i>X</i>	Diameter of Hub Top <i>A</i>	Diameter of Raised Face <i>R</i>	Minimum Fillet Radius <i>r<sub>1</sub></i>	Bore <i>B</i>	Diameter of Bolt Circle	Number of Holes	Diameter of Holes
26	38.25	3.50	3.88	7.62	28.62	26.00	29.50	0.44	Note-1	34.50	28	1.88
28	40.75	3.75	4.12	8.12	30.81	28.00	31.50	0.50	Note-1	37.00	28	2.00
30	43.00	4.00	4.38	8.62	32.94	30.00	33.75	0.50	Note-1	39.25	28	2.13
32	45.25	4.25	4.56	9.12	35.00	32.00	36.00	0.50	Note-1	41.50	28	2.13
34	47.50	4.38	4.81	9.50	37.19	34.00	38.00	0.56	Note-1	43.50	28	2.13
36	50.00	4.50	5.06	9.88	39.38	36.00	40.25	0.56	Note-1	46.00	32	2.13
38	47.50	4.88	4.88	8.12	39.50	38.00	40.75	0.56	Note-1	44.00	32	1.88
40	50.00	5.12	5.12	8.50	41.50	40.00	43.00	0.56	Note-1	46.25	32	2.00
42	52.00	5.25	5.25	8.81	43.62	42.00	45.00	0.56	Note-1	48.25	32	2.00
44	54.50	5.50	5.50	9.18	45.62	44.00	47.25	0.56	Note-1	50.50	32	2.13
46	56.75	5.75	5.75	9.62	47.75	46.00	49.50	0.56	Note-1	52.75	36	2.13
48	59.50	6.00	6.00	10.12	49.88	48.00	51.50	0.56	Note-1	55.25	28	2.38
50	61.75	6.19	6.25	10.56	52.00	50.00	53.62	0.56	Note-1	57.50	32	2.38
52	63.75	6.38	6.44	10.88	54.00	52.00	55.62	0.56	Note-1	59.50	32	2.38
54	67.00	6.69	6.75	11.38	56.12	54.00	57.88	0.56	Note-1	62.25	28	2.63
56	69.00	6.88	6.94	11.75	58.25	56.00	60.12	0.56	Note-1	64.25	32	2.63
58	71.00	7.00	7.12	12.06	60.25	58.00	62.12	0.56	Note-1	66.25	32	2.63
60	74.25	7.31	7.44	12.56	62.38	60.00	64.18	0.56	Note-1	69.00	32	2.88

Notes:  
 (1) To be specified by the Customer.  
 (2) When these flanges are required with flat face, the flat face may be either the full *t<sub>f</sub>* dimension thickness plus 0.25 in. or the *t<sub>f</sub>* dimension thickness without the raised face height.