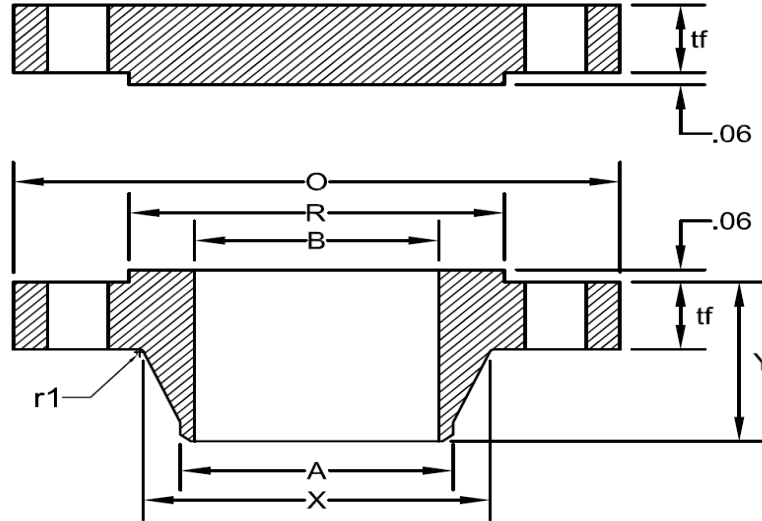




SERIES B CLASS 300 FLANGE

ASME B16.47-2017



Nominal Pipe Size	Outside Diameter <i>O</i>	Minimum Thickness							Bolt			
		Welding Neck (Note-2) <i>t_f</i>	Blind <i>t_f</i>	Length Through Hub <i>Y</i>	Diameter of Hub <i>X</i>	Diameter of Hub Top <i>A</i>	Diameter of Raised Face <i>R</i>	Minimum Fillet Radius <i>r_f</i>	Bore <i>B</i>	Diameter of Bolt Circle	Number of Holes	Diameter of Holes
26	34.12	3.44	3.44	5.63	27.62	26.19	29.00	0.56	Note-1	31.62	32	1.38
28	36.25	3.44	3.44	5.81	29.75	28.19	31.00	0.56	Note-1	33.75	36	1.38
30	39.00	3.63	3.63	6.16	32.00	30.25	33.25	0.56	Note-1	36.25	36	1.50
32	41.50	4.00	4.00	6.56	34.00	32.25	35.50	0.62	Note-1	38.50	32	1.63
34	43.62	4.00	4.00	6.75	36.12	34.25	37.50	0.62	Note-1	40.62	36	1.63
36	46.12	4.00	4.00	7.06	38.00	36.25	39.75	0.62	Note-1	42.88	32	1.75
38	48.12	4.31	4.31	7.50	40.00	38.25	41.75	0.62	Note-1	44.88	36	1.75
40	50.12	4.50	4.50	7.75	42.00	40.25	43.88	0.62	Note-1	46.88	40	1.75
42	52.50	4.63	4.63	8.00	44.00	42.31	46.00	0.62	Note-1	49.00	36	1.88
44	54.50	4.94	4.94	8.38	46.19	44.31	48.00	0.62	Note-1	51.00	40	1.88
46	57.50	5.00	5.06	8.69	48.38	46.31	50.00	0.62	Note-1	53.75	36	2.00
48	59.50	5.00	5.25	8.75	50.31	48.31	52.25	0.62	Note-1	55.75	40	2.00
50	61.50	5.38	5.44	9.19	52.38	50.31	54.25	0.62	Note-1	57.75	44	2.00
52	63.50	5.56	5.61	9.50	54.44	52.31	56.25	0.62	Note-1	59.75	48	2.00
54	65.88	5.32	5.81	9.38	56.50	54.31	58.25	0.62	Note-1	62.12	48	2.00
56	69.50	6.00	6.12	10.50	58.81	56.31	60.50	0.69	Note-1	65.00	36	2.38
58	71.94	6.00	6.31	10.75	60.94	58.31	62.75	0.69	Note-1	67.44	40	2.38
60	73.94	5.88	6.50	10.63	62.94	60.31	65.00	0.69	Note-1	69.44	40	2.38

Notes:
 (1) To be specified by the Customer.
 (2) When these flanges are required with flat face, the flat face may be either the full *t_f* dimension thickness plus 0.06 in. or the *t_f* dimension thickness without the raised face height.