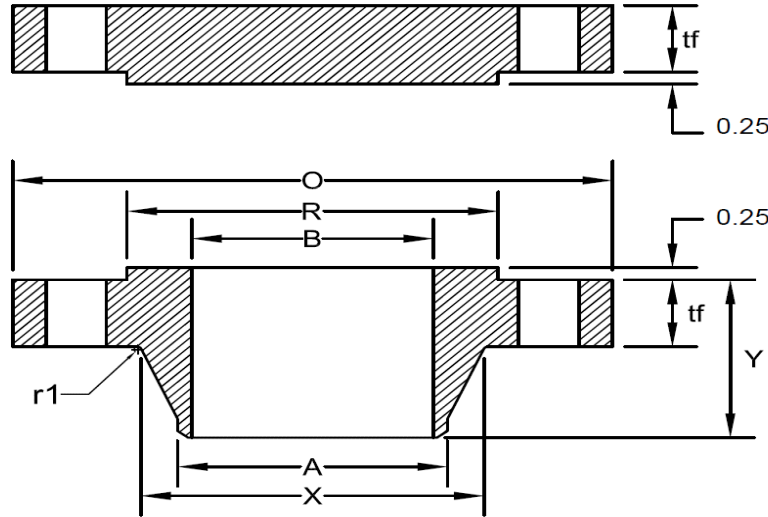




# SERIES B CLASS 400 FLANGE

ASME B16.47-2017



Minimum Thickness										Bolt		
Nominal Pipe Size	Outside Diameter <i>O</i>	Welding Neck (Note-2) <i>t<sub>f</sub></i>	Blind <i>t<sub>f</sub></i>	Length Through Hub <i>Y</i>	Diameter of Hub <i>X</i>	Diameter of Hub <i>A</i>	Diameter of Raised Face <i>R</i>	Minimum Fillet Radius <i>r<sub>1</sub></i>	Bore <i>B</i>	Diameter of Bolt Circle	Number of Holes	Diameter of Holes
26	33.50	3.50	3.50	5.88	27.12	26.00	28.00	0.44	Note-1	30.75	28	1.50
28	36.00	3.75	3.75	6.25	29.12	28.00	30.00	0.50	Note-1	33.00	24	1.63
30	38.25	4.00	4.00	6.69	31.25	30.00	32.25	0.50	Note-1	35.25	28	1.63
32	40.75	4.25	4.25	7.06	33.25	32.00	34.38	0.50	Note-1	37.50	28	1.75
34	42.75	4.38	4.38	7.38	35.38	34.00	36.50	0.56	Note-1	39.50	32	1.75
36	45.50	4.69	4.69	7.88	37.50	36.00	38.62	0.56	Note-1	42.00	28	1.88
38	-	-	-	-	-	-	-	-	-	-	-	-
40	-	-	-	-	-	-	-	-	-	-	-	-
42	-	-	-	-	-	-	-	-	-	-	-	-
44	-	-	-	-	-	-	-	-	-	-	-	-
46	-	-	-	-	-	-	-	-	-	-	-	-
48	-	-	-	-	-	-	-	-	-	-	-	-
50	-	-	-	-	-	-	-	-	-	-	-	-
52	-	-	-	-	-	-	-	-	-	-	-	-
54	-	-	-	-	-	-	-	-	-	-	-	-
56	-	-	-	-	-	-	-	-	-	-	-	-
58	-	-	-	-	-	-	-	-	-	-	-	-
60	-	-	-	-	-	-	-	-	-	-	-	-

Notes:  
 (1) To be specified by the Customer.  
 (2) When these flanges are required with flat face, the flat face may be either the full *t<sub>f</sub>* dimension thickness plus 0.25 in. or the *t<sub>f</sub>* dimension thickness without the raised face height.