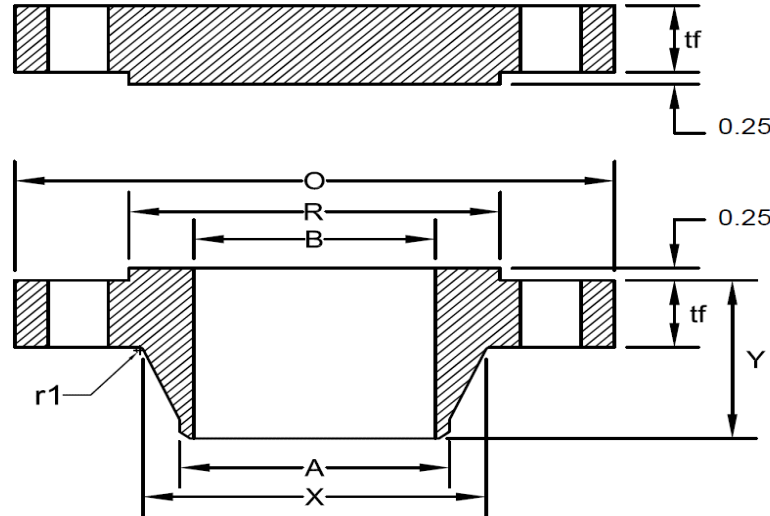




SERIES B CLASS 600 FLANGE

ASME B16.47-2017



1	2	3	4	5	6	7	8	9	10	11	12	13
Minimum Thickness										Bolt		
Nominal Pipe Size	Outside Diameter	Welding Neck	Blind	Length Through	Diameter of Hub	Diameter of Hub	Diameter of	Minimum Fillet	Bore	Diameter of Bolt	Number of Holes	Diameter of Holes
	<i>O</i>	<i>t_f</i>	<i>t_f</i>	<i>Y</i>	<i>X</i>	<i>A</i>	<i>R</i>	<i>r_f</i>	<i>B</i>	Circle		
26	35.00	4.38	4.38	7.12	27.50	26.00	28.62	0.50	Note-1	31.75	28	1.76
28	37.50	4.56	4.56	7.50	29.62	28.00	30.88	0.50	Note-1	34.00	28	1.88
30	40.25	4.94	5.00	8.06	31.75	30.00	33.12	0.50	Note-1	36.50	28	2.00
32	42.75	5.12	5.31	8.50	33.88	32.00	35.25	0.50	Note-1	38.75	28	2.13
34	45.75	5.56	5.68	9.19	36.00	34.00	37.50	0.56	Note-1	41.50	24	2.38
36	47.75	5.75	5.94	9.56	38.12	36.00	39.75	0.56	Note-1	43.50	28	2.38
38	-	-	-	-	-	-	-	-	-	-	-	-
40	-	-	-	-	-	-	-	-	-	-	-	-
42	-	-	-	-	-	-	-	-	-	-	-	-
44	-	-	-	-	-	-	-	-	-	-	-	-
46	-	-	-	-	-	-	-	-	-	-	-	-
48	-	-	-	-	-	-	-	-	-	-	-	-
50	-	-	-	-	-	-	-	-	-	-	-	-
52	-	-	-	-	-	-	-	-	-	-	-	-
54	-	-	-	-	-	-	-	-	-	-	-	-
56	-	-	-	-	-	-	-	-	-	-	-	-
58	-	-	-	-	-	-	-	-	-	-	-	-
60	-	-	-	-	-	-	-	-	-	-	-	-

Notes:
 (1) To be specified by the Customer.
 (2) When these flanges are required with flat face, the flat face may be either the full *t_f* dimension thickness plus 0.25 in. or the *t_f* dimension thickness without the raised face height.