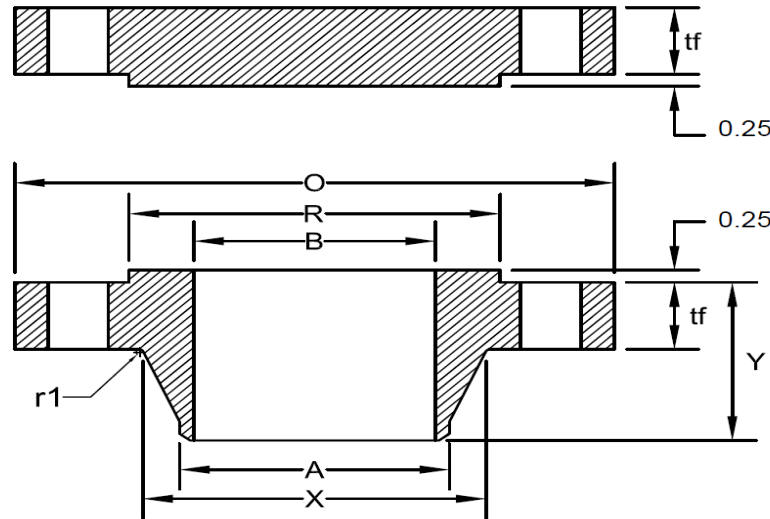




SERIES B CLASS 900 FLANGE

ASME B16.47-2017



Nominal Pipe Size	Minimum Thickness								Bolt			
	Outside Diameter O	Welding Neck (Note-2) t_f	Blind t_f	Length Through Hub Y	Diameter of Hub X	Diameter of Hub A	Diameter of Raised Face R	Minimum Fillet Radius r_1	Bore B	Diameter of Bolt Circle	Number of Holes	Diameter of Holes
26	40.25	5.31	6.06	10.19	29.25	26.00	30.00	0.44	Note-1	35.50	20	2.63
28	43.50	5.81	6.56	10.88	31.38	28.00	32.25	0.50	Note-1	38.25	20	2.88
30	46.50	6.12	6.93	11.38	33.50	30.00	34.50	0.50	Note-1	40.75	20	3.13
32	48.75	6.31	7.31	11.94	35.75	32.00	36.50	0.50	Note-1	43.00	20	3.13
34	51.75	6.75	7.68	12.56	37.88	34.00	39.00	0.56	Note-1	45.50	20	3.38
36	53.00	6.81	7.94	12.81	40.00	36.00	40.50	0.56	Note-1	47.25	24	3.13
38	-	-	-	-	-	-	-	-	-	-	-	-
40	-	-	-	-	-	-	-	-	-	-	-	-
42	-	-	-	-	-	-	-	-	-	-	-	-
44	-	-	-	-	-	-	-	-	-	-	-	-
46	-	-	-	-	-	-	-	-	-	-	-	-
48	-	-	-	-	-	-	-	-	-	-	-	-
50	-	-	-	-	-	-	-	-	-	-	-	-
52	-	-	-	-	-	-	-	-	-	-	-	-
54	-	-	-	-	-	-	-	-	-	-	-	-
56	-	-	-	-	-	-	-	-	-	-	-	-
58	-	-	-	-	-	-	-	-	-	-	-	-
60	-	-	-	-	-	-	-	-	-	-	-	-

Notes:

- (1) To be specified by the Customer.
- (2) When these flanges are required with flat face, the flat face may be either the full t_f dimension thickness plus 0.25 in. or the t_f dimension thickness without the raised face height.